

Product Description

The SLC-USB-Stick can be used in combination with all esave SL-Controllers. It comes with a license for the SL-Configurator - a software product, built for the Windows platform. SLC-USB-Stick and SL-Configurator application enables you to monitor, configure and manage your lighting system onsite.

BENEFITS

- On-Site management of esave devices.
- User-friendly Windows software to view, configure and manage esave devices.
- System configuration without Internet connection.

FEATURES



On-Site Management

The intuitive, easy-to-use configuration tool allows the on-site configuration of all parameters (i.e., dimming level etc.) for either an individual or a group of luminaires.



Easy Interface

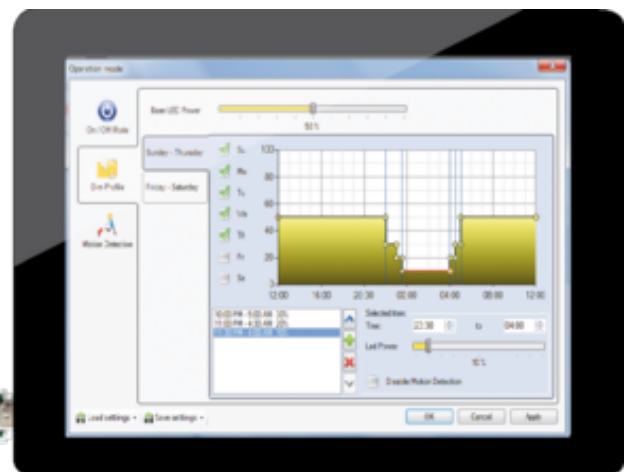
Access updates on the overall system condition, active luminaires and their dimming profiles with visual representations, and environmental data such as temperature and CO2 levels. Access alerts you to any system failures and provides convenient access to essential settings through predefined toolbars.

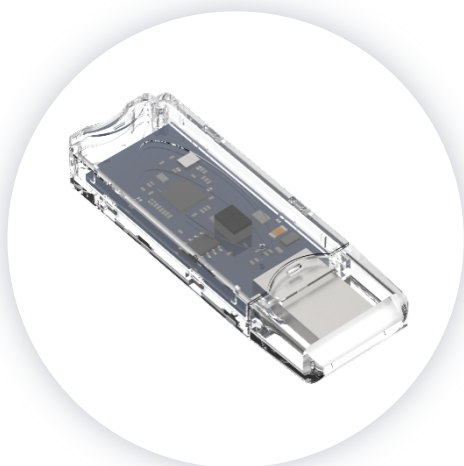


Mesh Network

The Communication is ensured via an automatic, organizing 2.4 GHz mesh network. Each streetlight communicates with all luminaires which can be reached.

SOFTWARE SL-CONFIGURATOR





esave SLC-USB-Stick



esave SL-Configurator

Maximum Ratings

Supply voltage	6 V DC
Storage temperature	-40...+90 °C

Operating Characteristics

Supply voltage range	4.5 – 5.5 V DC
Operating temperature	-25...+85 °C

Wireless Characteristics

RF frequency range	2.420 – 2.480 GHz
RF nominal output power	4.5 dBm typ. 8 dBm max.
Receiver sensitivity	-97 dBm

Materials & Colors

Color	Transparent
-------	-------------