

Product Description

The SLC-USB-Stick can be used in combination with all esave SL-Controllers. It comes with a license for the SL-Configurator - a software product, built for the Windows platform. SLC-USB-Stick and SL-Configurator application enables you to monitor, configure and manage your lighting system onsite.

BENEFITS

- On-Site management of esave devices
- User-friendly Windows software to view, configure and manage esave devices
- System configuration without Internet connection

FEATURES



On-Site Management

The intuitive, easy-to-use configuration tool allows the on-site configuration of all parameters (i.e., dimming level etc.) for either an individual or a group of luminaires.



Easy Interface

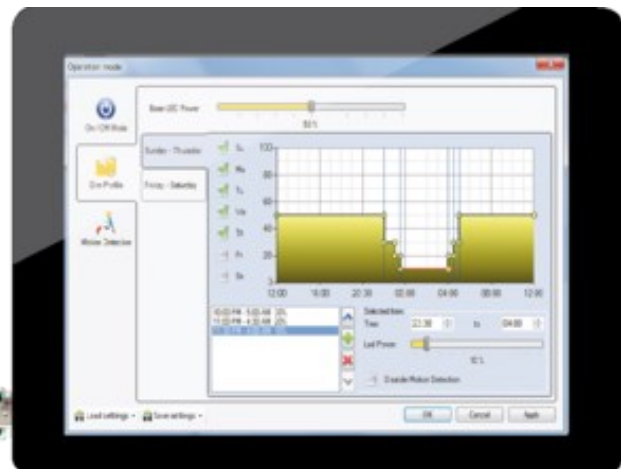
Access updates on the overall system condition, active luminaires and their dimming profiles with visual representations, and environmental data such as temperature and CO2 levels. Access alerts you to any system failures and provides convenient access to essential settings through predefined toolbars.

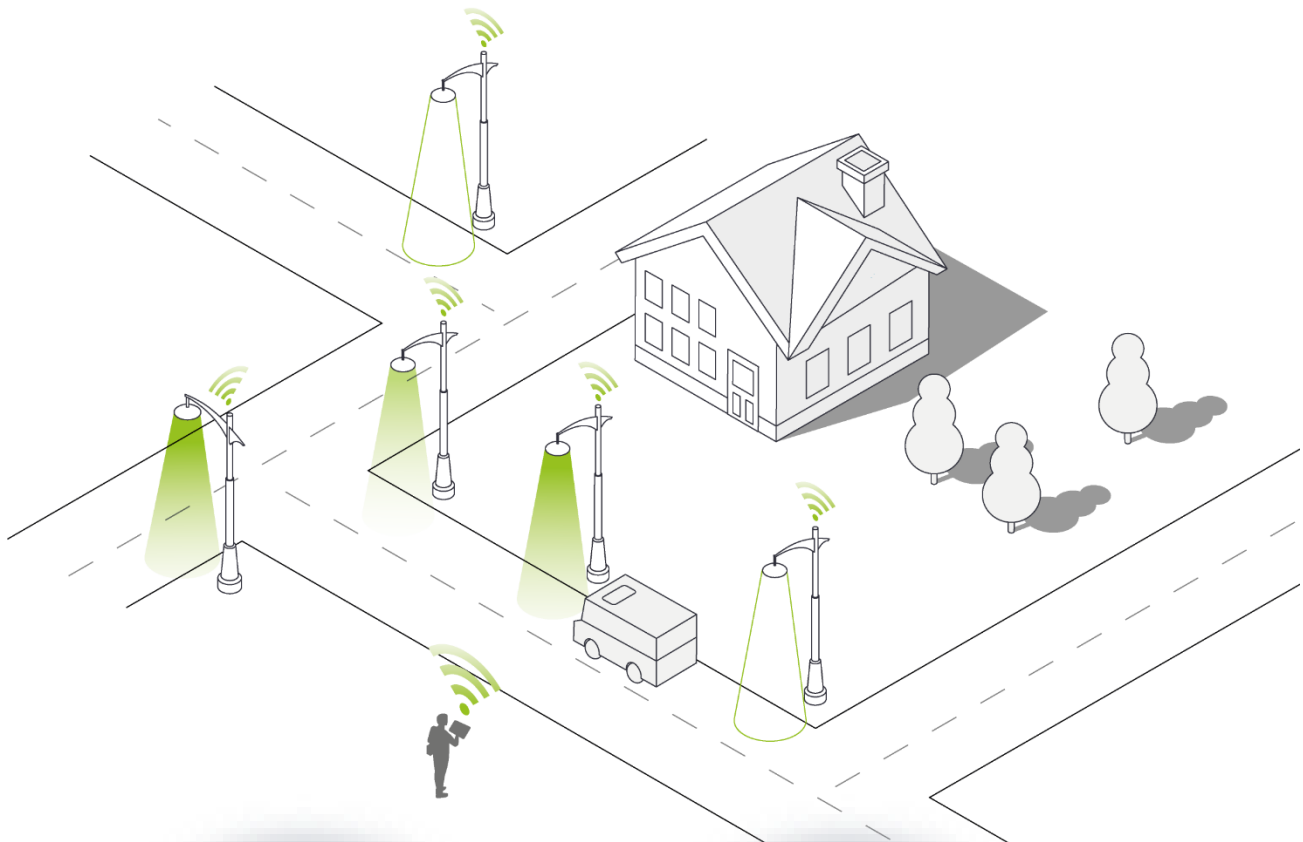


Mesh Network

The Communication is ensured via an automatic, organizing 2.4 GHz mesh network. Each streetlight communicates with all luminaires which can be reached.

SOFTWARE SL-CONFIGURATOR





esave SLC-USB-Stick



esave SL-Configurator

Maximum Ratings

Supply voltage	6 V DC
Storage temperature	-40...+90 °C

Operating Characteristics

Supply voltage range	4.5 – 5.5 V DC
Operating temperature	-25...+85 °C

Wireless Characteristics

RF frequency range	2.420 – 2.480 GHz
RF nominal output power	4.5 dBm typ. 8 dBm max.
Receiver sensitivity	-97 dBm

Materials & Colors

Color	Transparent
--------------	-------------

Disclaimer

Subject to change without notice. esave ag reserves the right to make changes in specifications and/or to discontinue any product at any time without notice or obligation. Always make sure to use the most recent release.



SLC-USB-Stick

Headquarters and Locations

esave ag

Headquarters
La-Nicca-Strasse 6
7000 Chur
Switzerland

Phone: +41 81 511 55 50
Support: +41 81 511 55 52
info@esaveag.com
support@esaveag.com
www.esaveag.com

esave ag APAC

Asia Office
Phone: +65 6844 1912
Support: +65 9699 0958
chris.lee@esavesg.com

esave Technologies SRL

Romania Office
Phone: +40 728 115205
office@esave-romania.ro

esave Deutschland GmbH

Germany Office
Phone: +49 2152 807 888 0
a.sommer@esavegmbh.de

esave USA Inc.

North America Office
Phone: +1 701 713 4847
info@esave-usa.com

esave Middle East

Middle East Office
Phone: +971 (56) 696 1910
esave.me@esaveag.com

esave Aus pty. ltd.

Australia Office
Phone: +61 413 920 225
a.spottiswood@esaveag.com

esave (Zhejiang) intelligent technology co. ltd.

China Office
Phone: +86 131 8246 0652
13182460652@163.com

Panitek Smart Energy Private Ltd.

India Office
office@panitek.com